

# PAJAMA PARTY

BY  
BARBARA JONES OF QUILTSOUP



Finished Quilt Size: 60" x 72"

**FREE PATTERN SHEET**



**Henry Glass & Co.**



49 West 37th Street, New York, NY 10018

tel: 212-686-5194 fax: 212-532-3525

Toll Free: 800-294-9495

[www.henryglassfabrics.com](http://www.henryglassfabrics.com)

facebook

# PAJAMA PARTY

Quilt Design by Barbara Jones

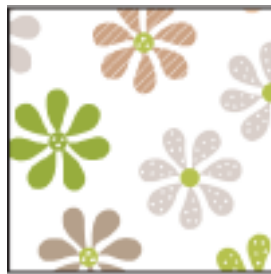
Finished Quilt Size: 60" x 72"

Finished Block Size: 12" x 12"

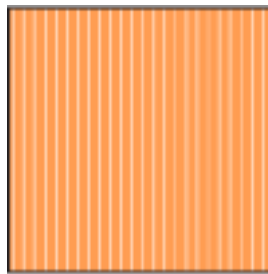
## Fabrics in the Collection



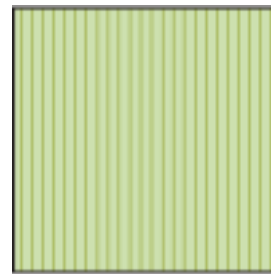
5820-2  
Pink Floral



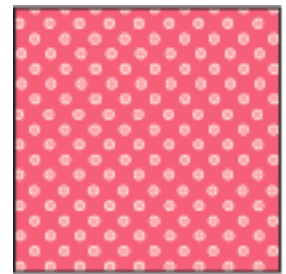
5820-6  
Beige Floral



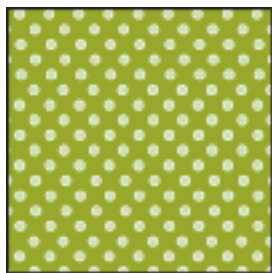
5821-33  
Orange Stripe



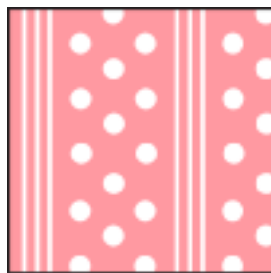
5821-66  
Green Stripe



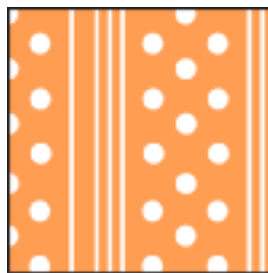
5822-22  
Dark Pink Dot



5822-66  
Green Dot



5824-22  
Pink Dot/Stripe



5824-33  
Orange Dot/Stripe



5825-22  
Pink Tonal



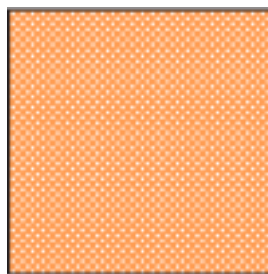
5825-66  
Green Tonal



5826-22  
Pale Pink Stripe



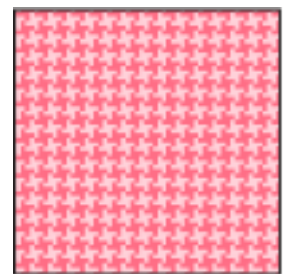
5826-44  
Beige Stripe



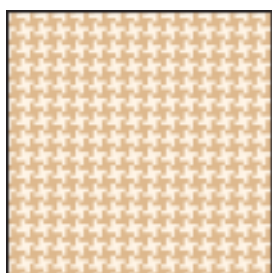
5827-33  
Orange Pin Dot



5827-44  
Beige Pin Dot



5828-22  
Pink Houndstooth



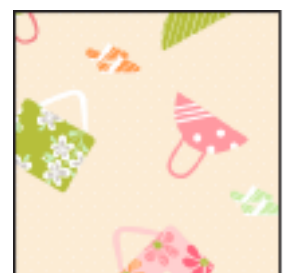
5828-44  
Beige Houndstooth



5829-2  
Pajama Panel



5839-22  
Pink Purses



5839-44  
Beige Purses

## Materials


1 ½ yards	Pink Floral	(5820-2)
½ yard	Orange Stripe	(5821-33)
½ yard	Green Stripe	(5821-66)
1 ⅛ yards	Dark Pink Dot	(5822-22)
	<i>(includes binding)</i>	
½ yard	Green Dot	(5822-66)
⅞ yard	Pink Dot/Stripe	(5824-22)
½ yard	Orange Dot/Stripe	(5824-33)
¼ yard	Pink Tonal	(5825-22)
½ yard	Green Tonal	(5825-66)
⅞ yard	Pale Pink Stripe	(5826-22)
⅞ yard	Beige Stripe	(5826-44)
½ yard	Orange Pin Dot	(5827-33)
½ yard	Pink Houndstooth	(5828-22)
4 yards	Pink Floral	(5820-2)
	<i>(for quilt backing)</i>	

template plastic  
 usual rotary cutting and sewing supplies  
 thread to match appliqué  
 all supplies for chosen method of appliqué such as (2) yards  
 of freezer paper or (2) yards of 20" wide, light-weight,  
 fusible webbing for machine appliqué  
 68" x 80" piece of batting

## Cutting Instructions

*Please note: all strips are cut across the width of the fabric from selvage edge to selvage edge.*


### From the pink floral, cut:

- (1) 13 ½" strip. Recut into (3) 13 ½" x 13 ½" squares.
- (1) 13 ¼" strip. Recut into (2) 13 ¼" x 13 ¼" squares.  
 Cut each square in half on the diagonal to make (4) triangles. 
- (2) 5 ½" strips. Trim each strip to 5 ½" x 42".

### From the orange stripe, cut:

- (1) 13 ½" strip. Recut into (2) 13 ½" x 13 ½" squares.


### From the green stripe, cut:

- (1) 13 ¼" strip. Recut into (2) 13 ¼" x 13 ¼" squares.  
 Cut each square in half on the diagonal to make (4) triangles. 


### From the dark pink dot, cut:

- (7) 2 ¼" strips for the binding.
- (6) 1 ½" strips for the inner border.

### From the pink dot/strip, cut:

- (1) 13 ½" strip. Recut into (3) 13 ¼" x 13 ¼" squares.  
 Cut each square in half on the diagonal to make (4) triangles. 
- (2) 5 ½" strips. Recut into (4) 5 ½" x 21" pieces.

### From the orange dot/strip, cut:


- (1) 13 ¼" strip. Recut into (3) 13 ¼" x 13 ¼" squares.  
 Cut each square in half on the diagonal to make (4) triangles. 

## Cutting Instructions (cont.)


### From the pink tonal, cut:

- (1) 5 ½" strip. Recut into (2) 5 ½" x 5 ½" squares.


### From the green tonal, cut:

- (1) 13 ¼" strip. Recut into (2) 13 ¼" x 13 ¼" squares.  
 Cut each square in half on the diagonal to make (4) triangles. 


### From the pale pink stripe, cut:

- (1) 13 ½" strip. Recut into (3) 13 ½" x 13 ½" squares.
- (1) 13 ¼" strip. Recut into (3) 13 ¼" x 13 ¼" squares.  
 Cut each square in half on the diagonal to make (4) triangles. 

### From the beige stripe, cut:

- (1) 13 ½" strip. Recut into (2) 13 ½" x 13 ½" squares.
- (1) 13 ¼" strip. Recut into (2) 13 ¼" x 13 ¼" squares.  
 Cut each square in half on the diagonal to make (4) triangles. 

### From the orange pin dot, cut:

- (1) 13 ¼" strip. Recut into (1) 13 ¼" x 13 ¼" squares.  
 Cut each square in half on the diagonal to make (4) triangles. 

### From the pink houndstooth, cut:

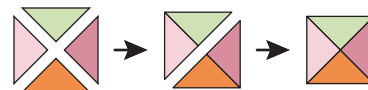
- (2) 5 ½" strips. Trim each strip to 5 ½" x 35".

**Reserve remaining fabric, including scraps, for appliqué.**

## Sewing Instructions

*All seams are sewn using 1/4" seam allowance with pieces held right sides together and raw edges even.*

Stitch a 13 ¼" pale pink triangle to a 13 ¼" green stripe triangle noting orientation of the printed stripes in each patch. Stitch a 13 ¼" orange dot/strip triangle to a 13 ¼" pink floral triangle, noting the orientation of the printed stripes in the orange patch. Sew these two units together to complete (1) pieced block. Using the quilt pictured on the cover as a guide, repeat to make a total of (9) pieced blocks. Be sure to note the orientation of all printed stripes in the directional print triangles. Many of the triangles cut in the previous section will be left over.



## Appliqué

1. Enlarge the paper patterns provided on the next page 200%. Using the enlarged patterns and template plastic, prepare templates for each of the following shapes: large petal, medium petal, small petal, flower center, leaf, reverse leaf, and stem. Please note that the paper patterns are not reversed and do not include seam allowances. All templates should be prepared as necessary for your chosen method of appliqué.

## Appliqué (cont.)

- Using the quilt pictured on the cover as a guide to correct fabric placement, prepare (10) each of each of the (7) shapes listed in step 1. Again, prepare as necessary for your preferred method of appliqué.
- Again using the quilt pictured on the cover as a guide, appliqué (1) of each shape to the right side of each 13 1/2" square. Trim each background square to 12 1/2" x 12 1/2" with the flower motif centered in each square.

## Quilt Assembly

- Arrange the pieced and appliqué blocks into (5) rows with (4) units in each row. Alternate the two kinds of blocks as shown in the quilt on the cover. Stitch the blocks into rows. Sew the rows together to complete the quilt center.
- Trim the selvages from the 1 1/2" dark pink dot strips and sew the strips together end to end to make a long 1 1/2" strip. From this long strip, cut (2) 60 1/2" and (2) 50 1/2" lengths. Sew the longer pieces to the left and right sides of the quilt top. Sew the shorter pieces to the top and bottom.
- Sew a 5 1/2" x 42" pink floral piece to a 5 1/2" x 21" pink dot/stripe piece. Repeat to make a second unit. Stitch these pieced borders to the left and right sides of the quilt top, noting orientation.
- Sew a 5 1/2" x 21" pink dot/stripe piece and a 5 1/2" pink tonal squares to opposite ends of a 5 1/2" x 35" pink houndstooth piece. Repeat to make a second unit. Stitch these pieced borders to the top and bottom of the quilt, again noting orientation.
- Layer the completed quilt top with batting and backing and quilt as desired.
- Trim the finished quilt and bind using the 2 1/4" dark pink dot strips.

## PILLOW CASE

### Materials

- 7/8 yard Main Fabric
- 3/8 yard Cuff Fabric
- 1/4 yard Accent Fabric

### Cutting Instructions

#### From the main fabric, cut:

- (1) 27" x 42" strip.

#### From the cuff fabric, cut:

- (1) 10" x 42" strip.

#### From the accent fabric, cut:

- (1) 2 1/2" x 42" strip.

### Sewing Instructions

- Press the cuff fabric strip in half, wrong sides together, to make a 5" x 42" strip. Press the accent fabric strip in half, wrong sides together, to make a 1 1/4" x 42" strip.
- With the right side of the main fabric strip facing up, layer the pressed cuff and accent strips on top of one long side of the main fabric strip, with all raw edges even and the accent strip sandwiched in between the cuff and main fabric strips. Stitch through all layers using 1/4" seam allowance.
- Fold the unit from step 2 in half, right sides together to make a 21" high by 31 1/2" wide unit. Stitch along two sides using 1/4" seam allowance as shown in the diagram to the right. Clip corners and turn right side out.

